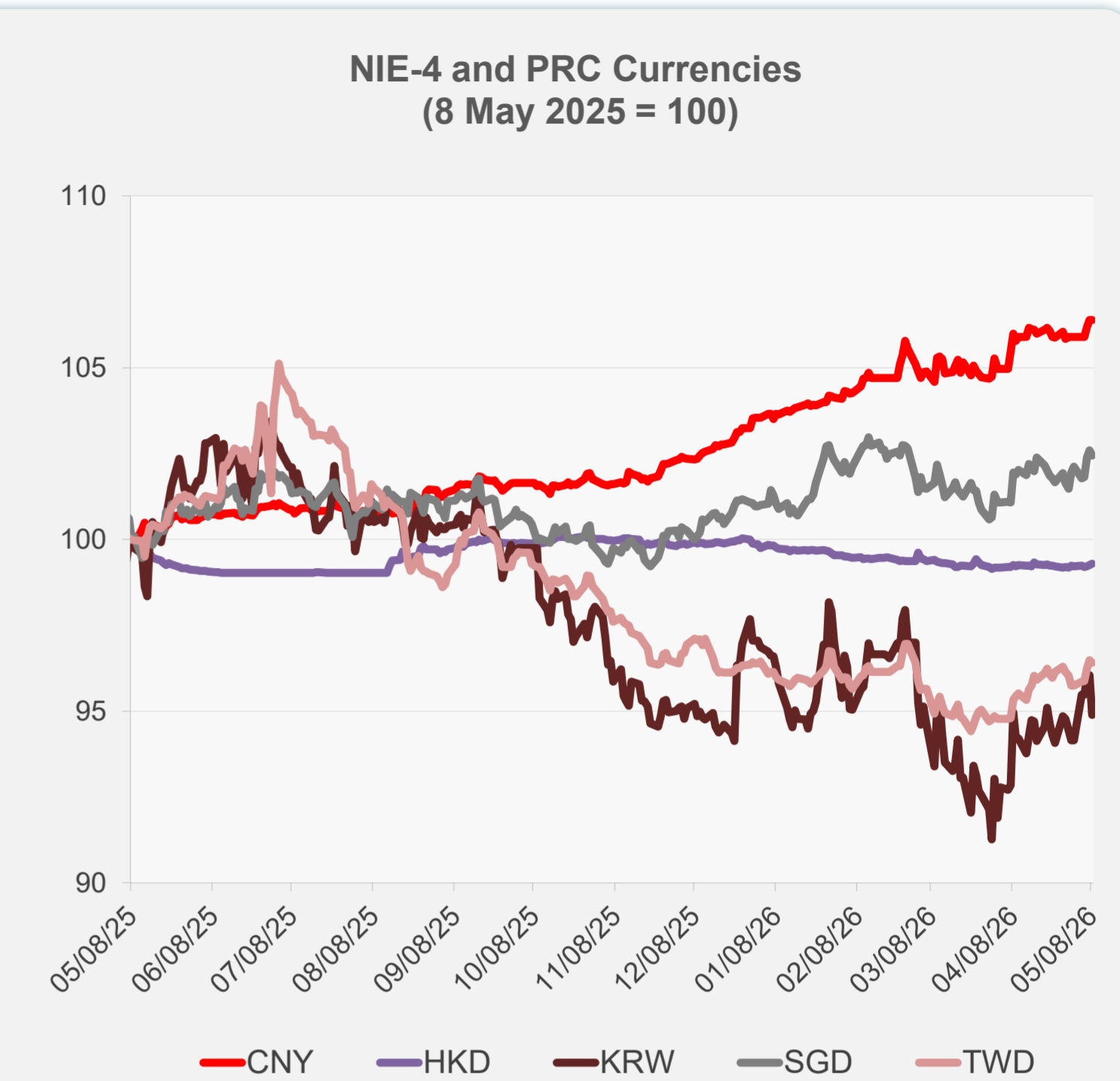
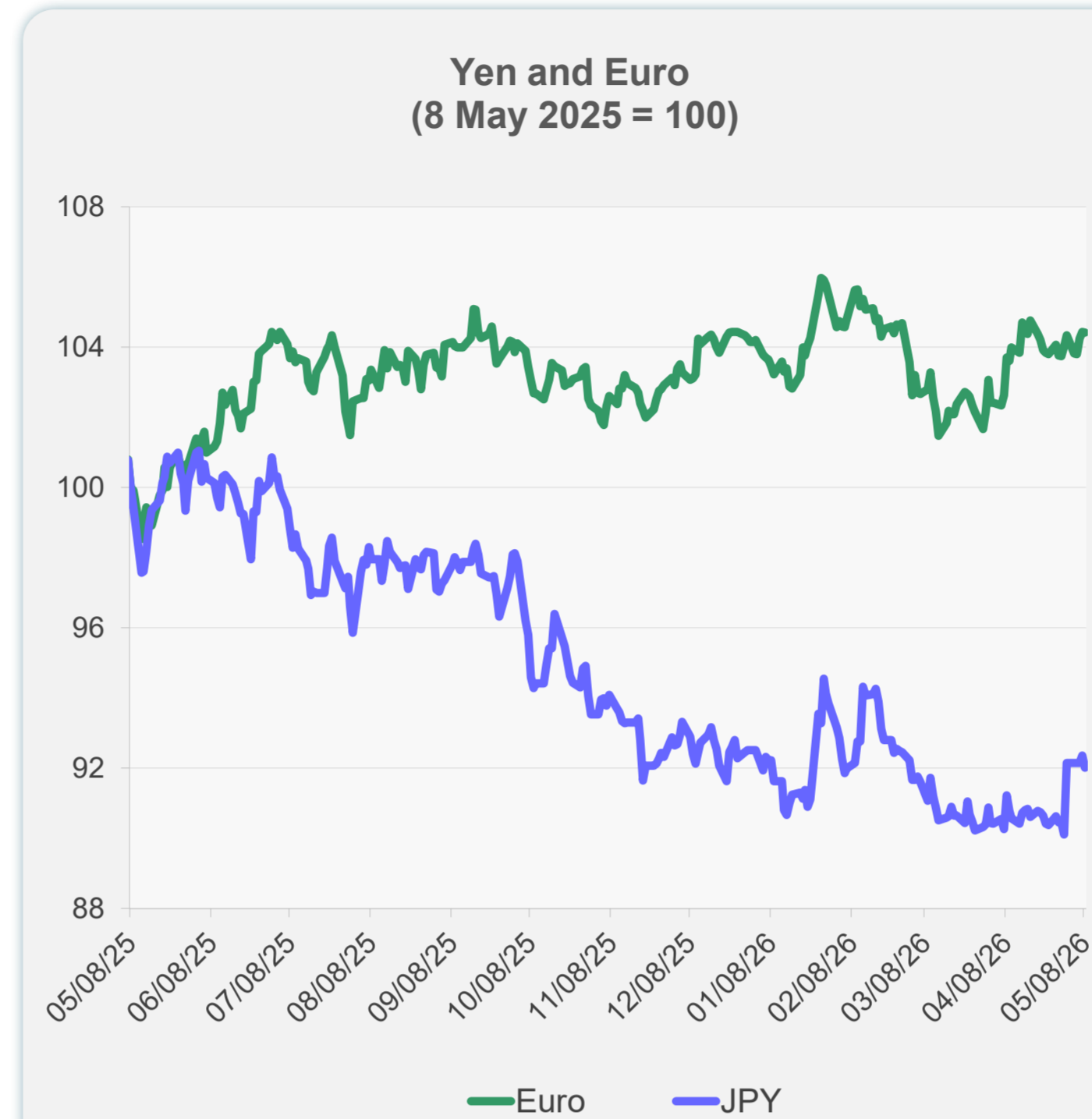
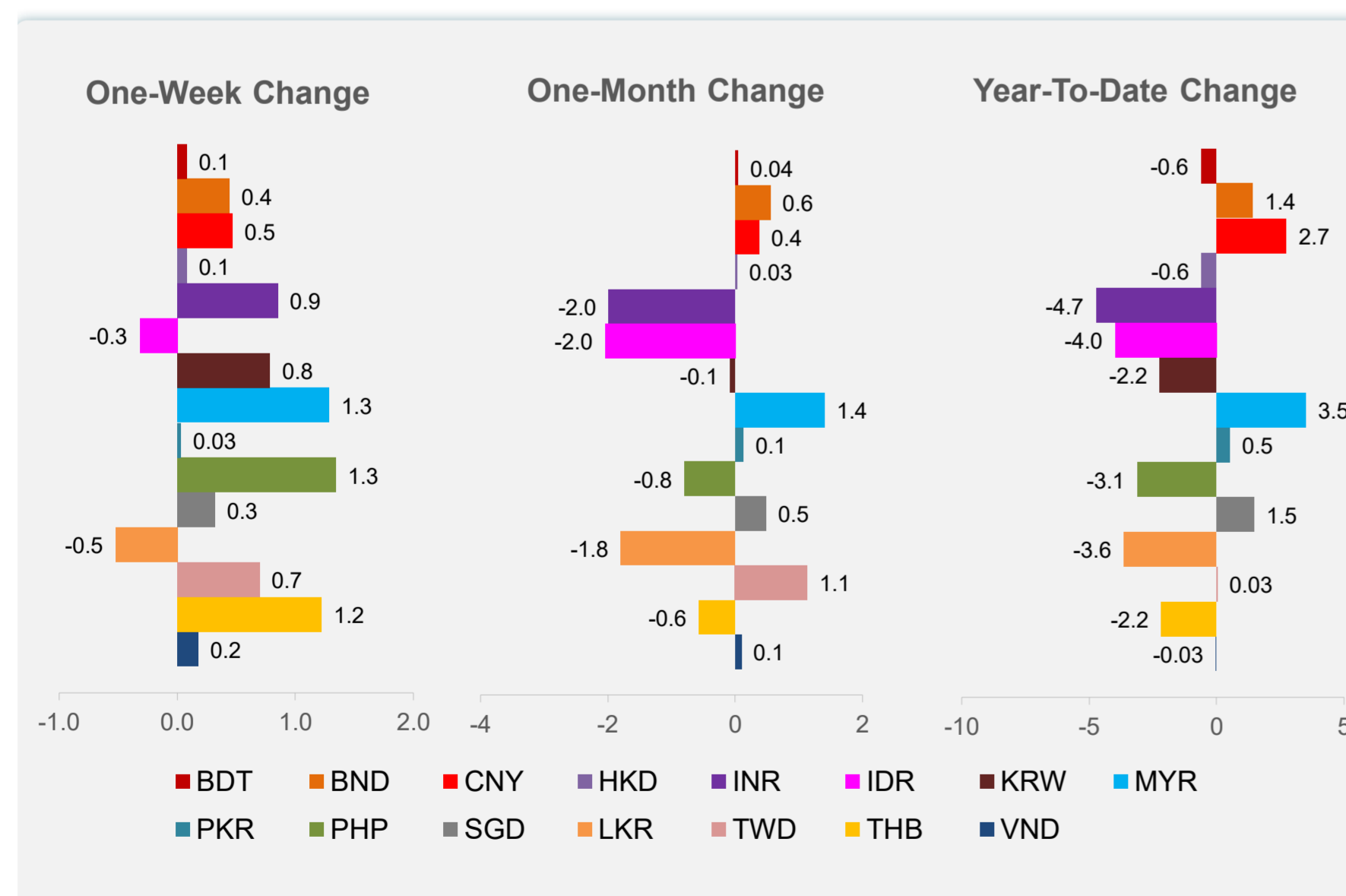
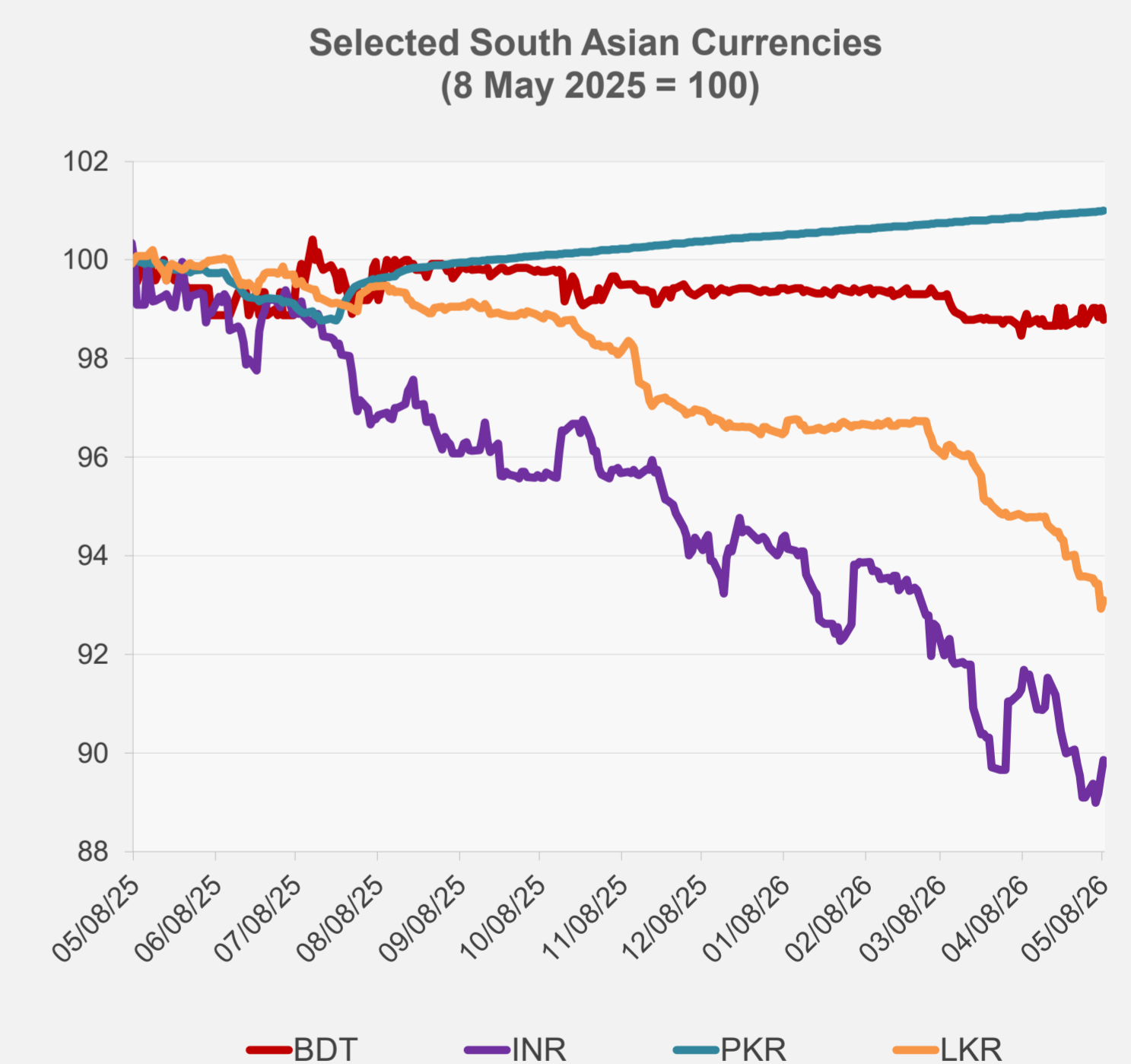
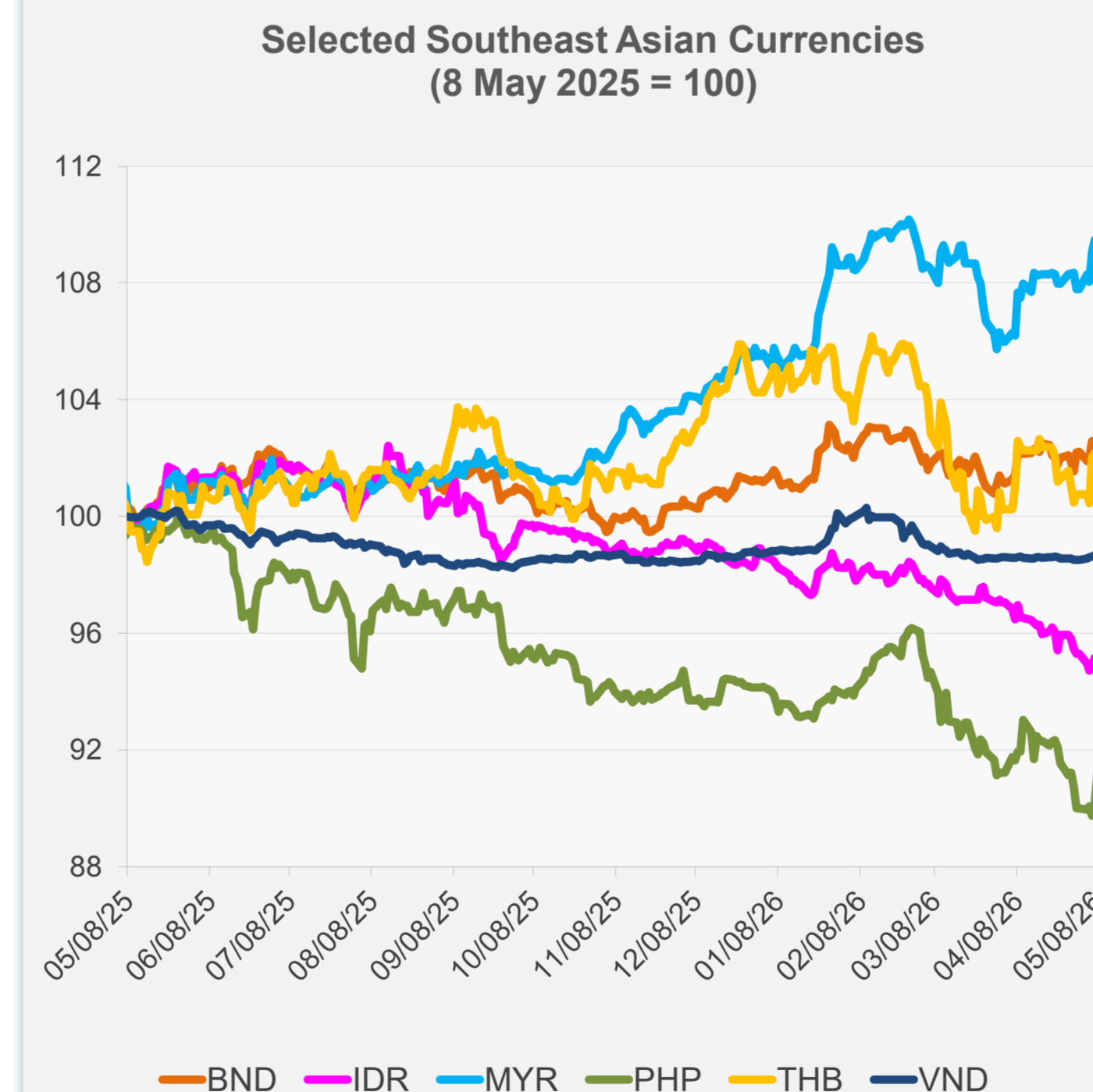


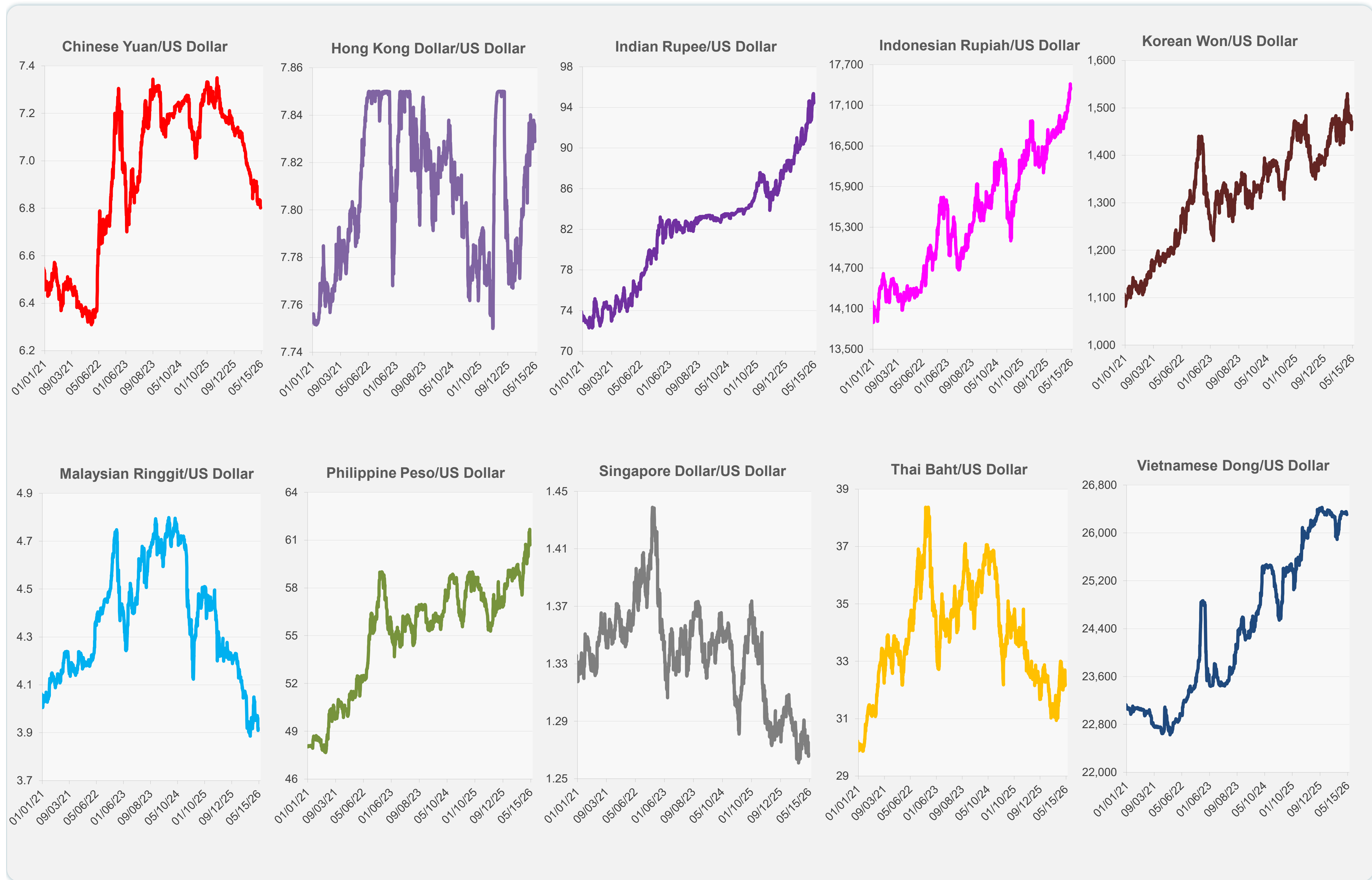
	Latest Closing	% change from Previous Day	% change from 01-Jan-26
Euro	0.85	-0.02	0.26
Japanese yen (JPY)	156.84	-0.36	-0.55
Bangladeshi taka (BDT)	123.00	-0.24	-0.61
Brunei dollar (BND)	1.27	0.15	1.40
Chinese yuan (CNY)	6.80	0.00	2.74
Hong Kong dollar (HKD)	7.83	0.03	-0.58
Indian rupee (INR)	94.44	0.36	-4.72
Indonesian rupiah (IDR)	17,365.00	-0.17	-3.97
Korean won (KRW)	1,471.70	-1.20	-2.22
Malaysian ringgit (MYR)	3.92	-0.28	3.49
Pakistan rupee (PKR)	278.67	0.01	0.51
Philippine peso (PHP)	60.69	1.13	-3.11
Singapore dollar (SGD)	1.27	-0.15	1.46
Sri Lanka rupee (LKR)	321.28	0.19	-3.63
Taipei,China NT dollar (TWD)	31.43	-0.06	0.03
Thai baht (THB)	32.20	-0.17	-2.17
Vietnamese dong (VND)	26,308.00	0.00	-0.03



NIE = Newly Industrialized Economies



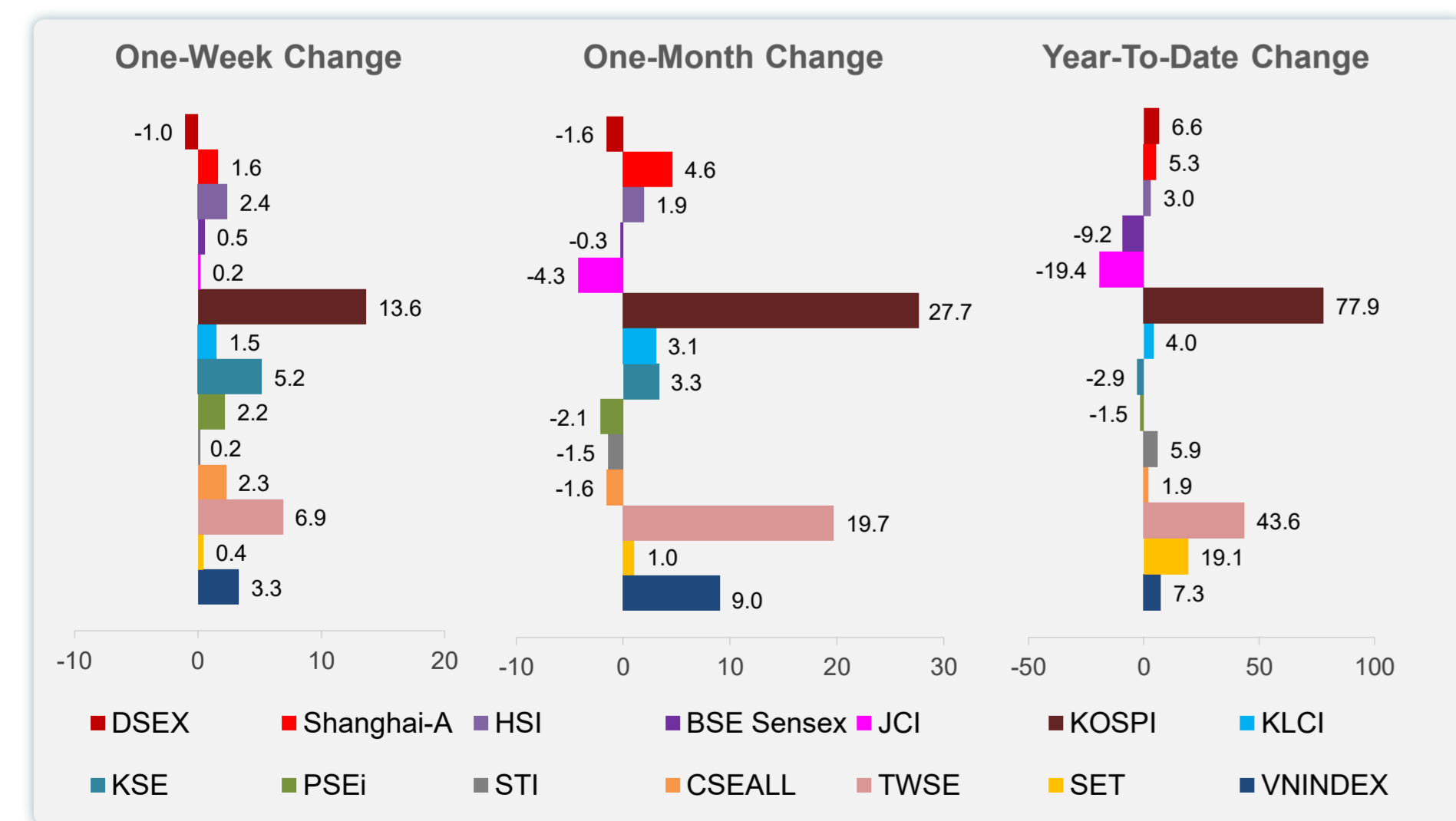
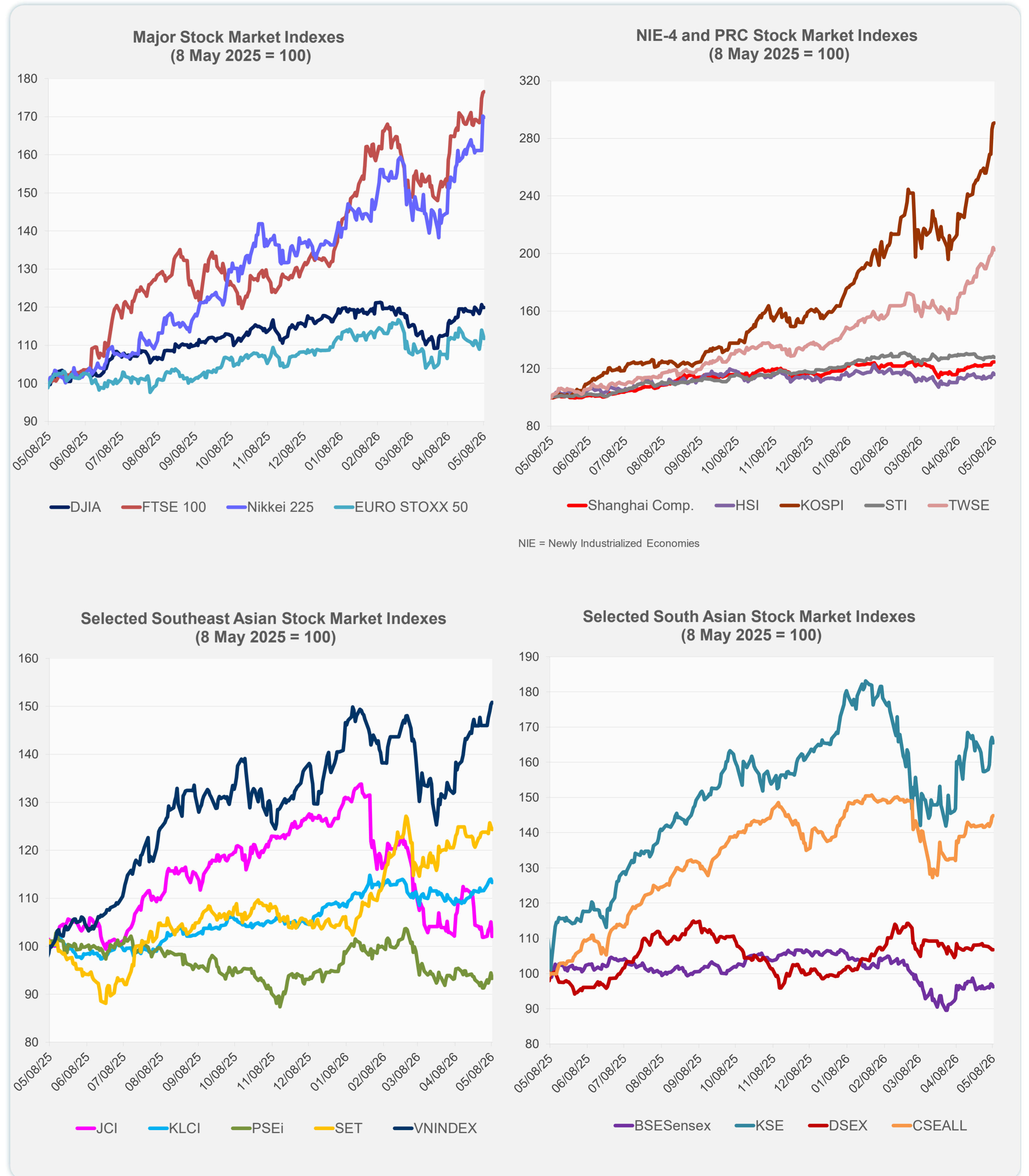
Note: Negative/Decreasing values indicate depreciation of local currency, and positive/increasing values indicate appreciation.
Source: ADB calculations using data from Bloomberg and Haver Analytics.



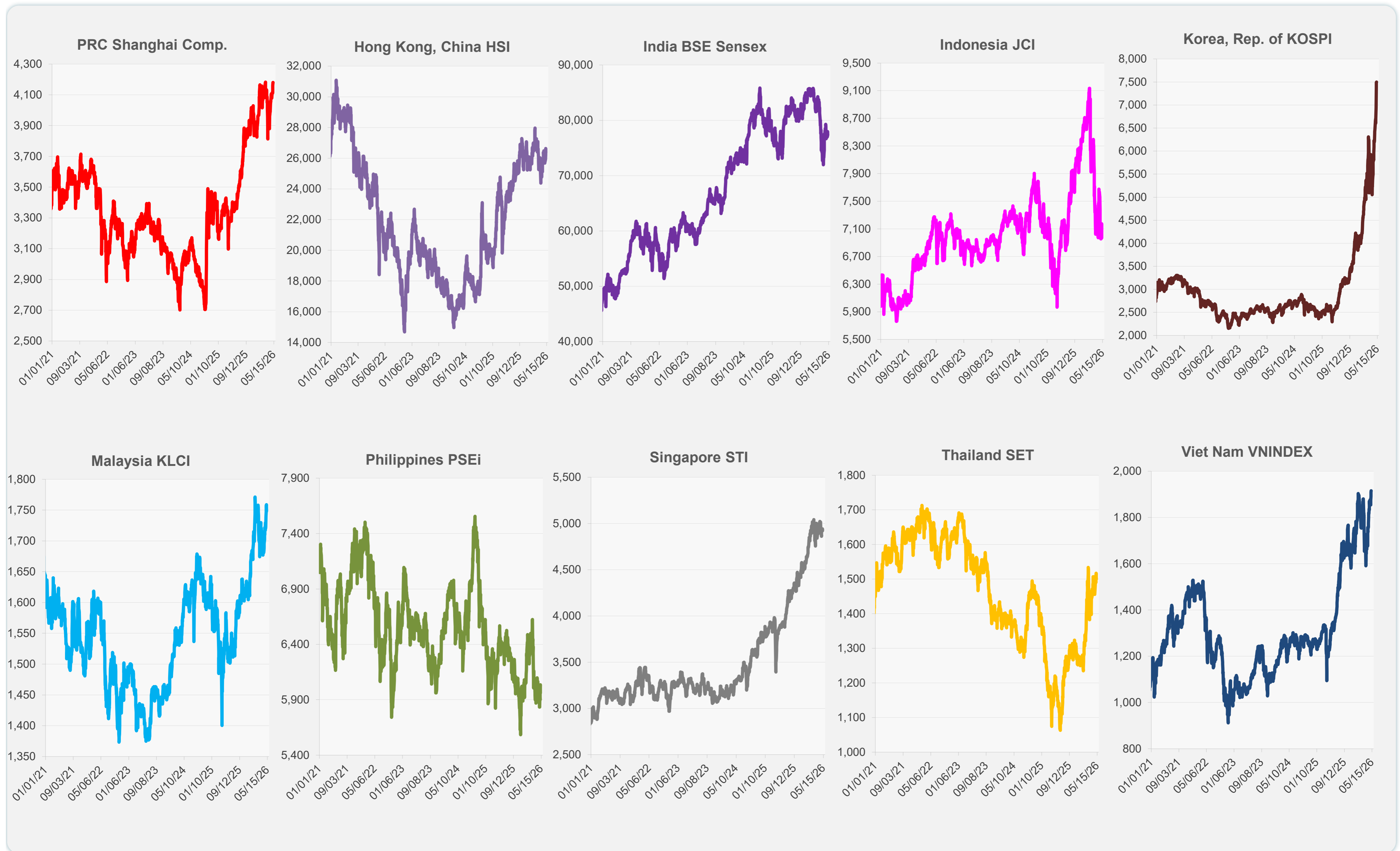
Source: Haver Analytics.

Daily Market Watch
STOCK INDEXES

	Latest Closing	% change from Previous Day	% change from 01-Jan-26
US Dow Jones Ind Avg	49,609.16	0.02	3.22
US NASDAQ	26,247.08	1.71	12.93
US S&P 500	7,398.93	0.84	8.08
UK FTSE 100	15,062.65	0.15	33.75
EURO STOXX 50	5,911.53	-1.02	2.07
Japan NIKKEI 225	62,713.65	-0.19	24.58
Bangladesh DSEX	5,234.10	0.00	6.59
PRC Shanghai Comp.	4,179.95	0.00	5.32
Hong Kong, China HSI	26,393.71	-0.87	2.98
India BSE Sensex	77,328.19	-0.66	-9.23
Indonesia JCI	6,969.40	-2.86	-19.40
Korea, Rep. of KOSPI	7,498.00	0.11	77.92
Malaysia KLCI	1,748.06	-0.61	4.04
Pakistan KSE 100	171,353.50	-0.90	-2.90
Philippines PSEi	5,960.97	-1.21	-1.52
Singapore STI	4,921.90	-0.41	5.93
Sri Lanka CSEALL	23,063.98	0.29	1.94
Taipei, China TWSE	41,603.94	-0.79	43.64
Thailand SET	1,500.36	-0.48	19.11
Viet Nam VNINDEX	1,915.37	0.33	7.33



Sources: ADB calculations using data from Bloomberg and CEIC Data Company.

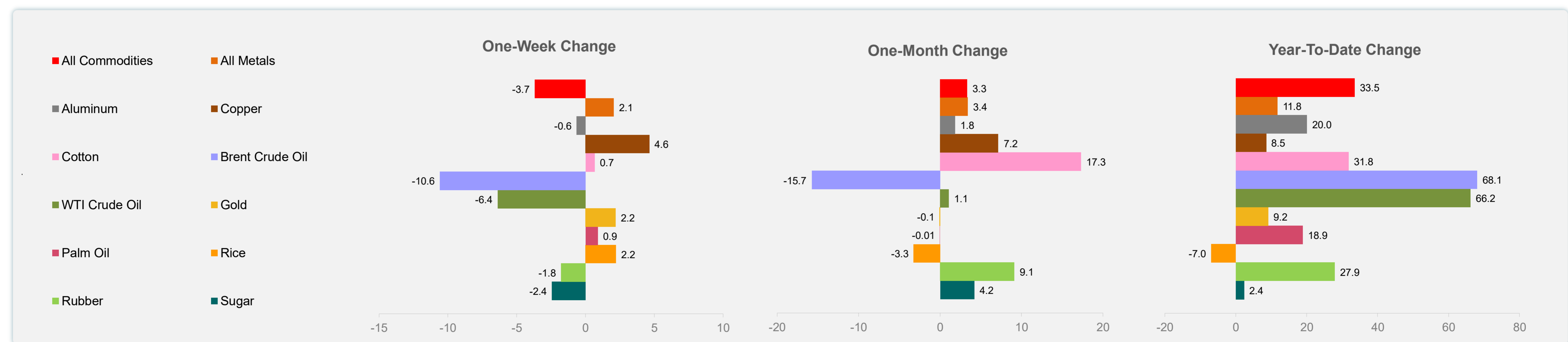
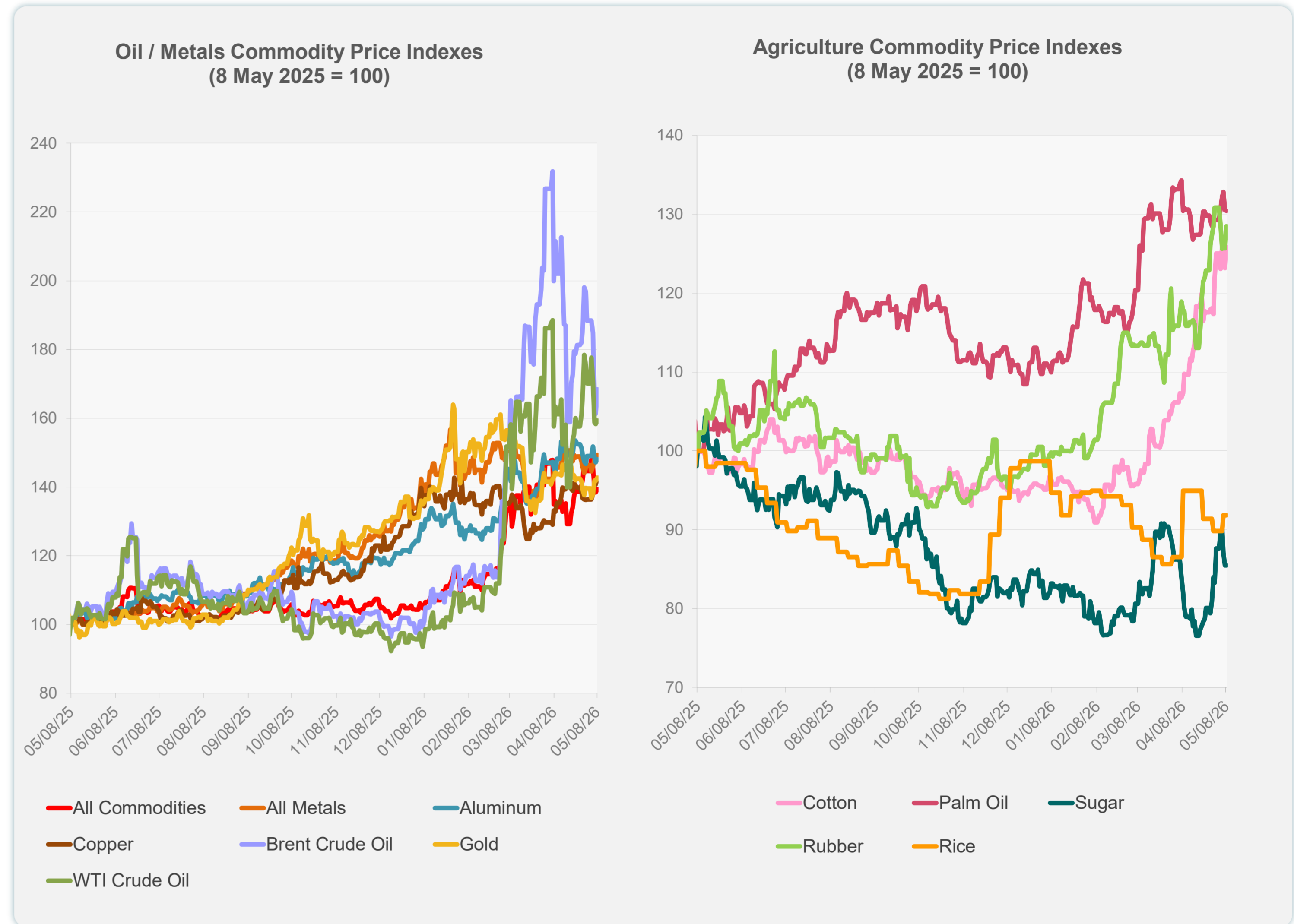


Sources: ADB calculations using data from Bloomberg and CEIC Data Company.

Daily Market Watch
COMMODITY PRICES

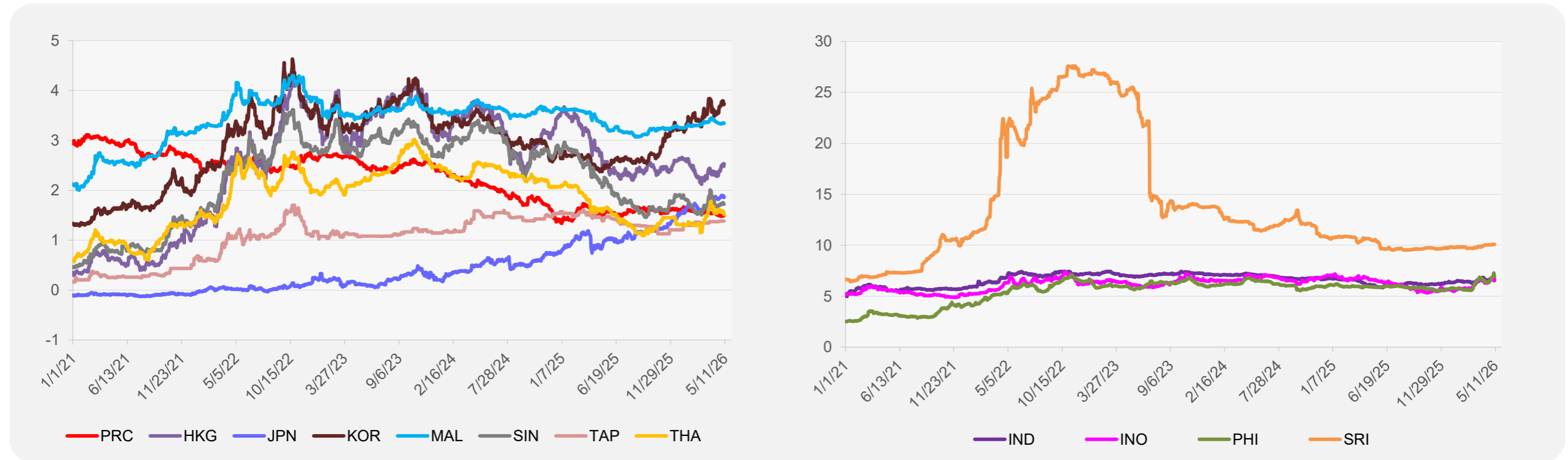
	Unit	Latest Closing	% change from Previous Day	% change from 01-Jan-26
S&P All Commodities	US\$	732.21	0.62	33.49
S&P All Metals	US\$	496.05	0.36	11.78
Aluminum	US\$/metric ton	3,562.63	0.58	20.03
Copper	US\$/metric ton	13,515.39	1.38	8.53
Cotton	US cents/lb	81.73	2.16	31.78
Brent Crude Oil	US\$/barrel	104.94	4.45	68.05
WTI Crude Oil	US\$/barrel	95.42	0.64	66.18
Gold	US\$/troy oz	4,715.25	0.63	9.17
Palm Oil	US\$/metric tonne	1,151.31	-0.09	18.86
Rice ¹	US\$/metric ton	415.00	0.00	-6.95
Rubber ²	US\$/kg	275.00	2.27	27.91
Sugar	US cents/lb	15.14	0.00	2.37

¹ Latest closing price from 6 May 2026.
² Singapore Exchange, Ribbed Smoked Sheet Rubber.

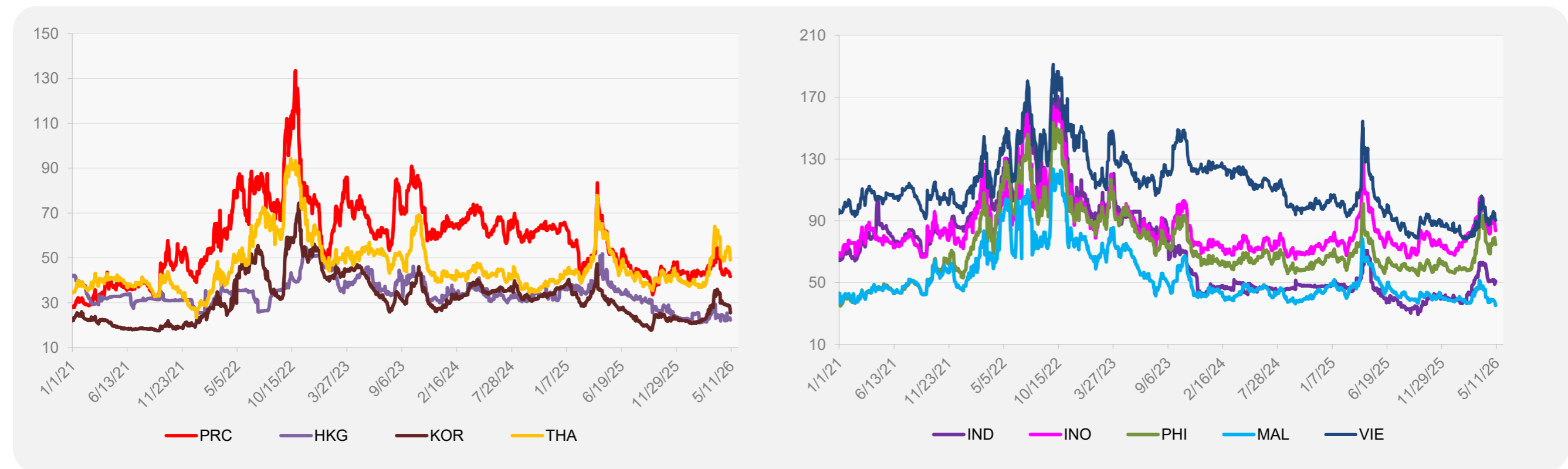


Source: ADB calculations using data from Bloomberg.

5-YEAR LOCAL CURRENCY GOVERNMENT BOND YIELDS (%)



5-YEAR CREDIT DEFAULT SWAP¹



¹ In USD and based on sovereign bonds.
Source: ADB calculations using data from Bloomberg.